

WHISKY FORK INSTRUCTIONS



▲ WARNING: Cycling can be dangerous. Bicycle products should be installed and serviced by a professional mechanic. Never modify your bicycle or accessories. Read and follow all product instructions and warnings including information on the manufacturer's website. Inspect your bicycle before every ride. Always wear a helmet.

▲ WARNING: Every bicycle product has a finite useful life. A bicycle and its components such as forks are subject to wear and stress. Different materials and mechanisms wear or fatigue from stress at different rates and have different life cycles. If a component's life cycle is exceeded, the component can suddenly and catastrophically fail, causing serious injury to the rider. This is why you need to frequently inspect your bicycle and its components for any signs of wear or fatigue. Scratches, cracks, bending, fraying or discoloration are all signs of stress-caused fatigue and may indicate that a part is at the end of its useful life and needs to be replaced. When you see any signs of fatigue or damage, do not ride the bicycle. Take it to a dealer for inspection, repair or replacement as necessary.

▲ WARNING: While the materials and workmanship of your bicycle, bicycle fork, or of individual components may be covered by a warranty for a specified period of time, this is no guarantee that the product will last the term of the warranty. Product life is often related to the kind of riding you do and to the treatment to which you submit the bicycle. The warranty is not meant to suggest that the bicycle or component cannot be broken or will last forever. It only means that the product is covered subject to the terms of the warranty.

Additional safety info can be found at: whiskyparts.com/safety

Intended Use & Compatibility

Whisky Parts Co. forks are available in a variety of steerer tube, axle, and brake configurations to work with your road, cyclocross, mountain, or fat bike. Consult with a professional bicycle mechanic to ensure that your new Whisky Parts Co. fork is compatible with your bicycle.

Condition	Description	Whisky Models
	This is a set of conditions for the operation of a bicycle on a regular paved surface where the tires are intended to maintain ground contact.	Whisky Road Forks
	This is a set of conditions for the operation of a bicycle that includes Condition 1 as well as unpaved and gravel roads and trails with moderate grades. In this set of conditions, contact with irregular terrain and loss of tire contact with the ground may occur. Drops are intended to be limited to 15cm (6") or less.	Whisky Cyclocross Forks Whisky Road+ Forks
	This is a set of conditions for operation of a bicycle that includes Condition 1 and 2 as well as rough trails, rough unpaved roads, and rough terrain and unimproved trails that require technical skills. Jumps and drops are intended to be less than 61cm (24").	Whisky Mountain Forks Whisky Fat Forks

▲ WARNING: Whisky Parts Co. recommends no less than 4mm of clearance between the tire, wheel, fork, and frame for road biking.

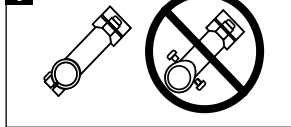
▲ WARNING: Whisky Parts Co. recommends no less than 6mm of clearance between the tire, wheel, fork, and frame for off road biking.

▲ WARNING: Attaching incompatible clamping devices to a fork can lead to breakage, causing a loss of control. If you are not sure if a device is compatible, consult your dealer.

Tools Required

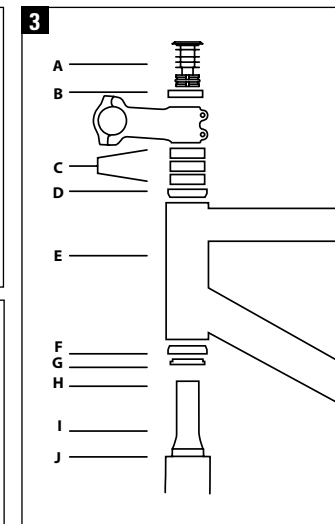
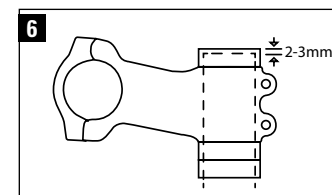
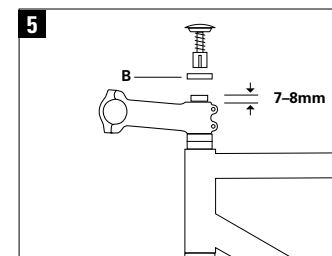
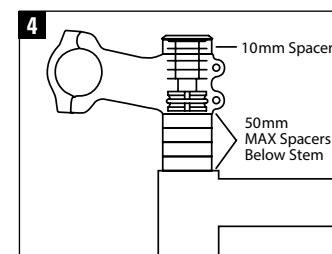
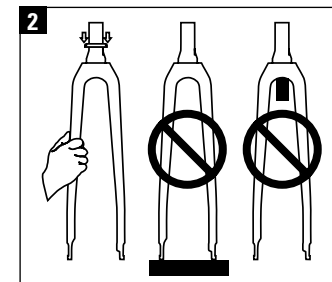
- Hacksaw with a fine 32 tpi tungsten carbide steel blade
- Steerer tube cutting guide (recommended)
- Allen wrenches: 4, 5, 6mm
- Torque wrench that measures in Newton meters
- 8mm box end wrench
- Blue threadlocker

Stem & Headset Preparation

1. Verify that the fork, headset and all parts required for proper assembly have compatible dimensions. The fork, headset, headset spacers, and stem steerer clamp must have compatible diameters. Incorrect use of components can cause component failure. Consult with your professional bicycle mechanic to ensure that your components are compatible.
 
2. Make sure any stem or headset parts that come into contact with the steerer tube are free of burrs or sharp edges. Remove burrs or sharp edges with fine-grit sandpaper.
3. Only use rear slot-style clamping stems on carbon steerers. Wedge-clamp stems must not be used and could result in failure (figure 1).

Fork Preparation

1. Install crown race according to manufacturer's instructions.
 - ▲ WARNING:** Do not place the fork on the dropout tips or crown while installing the race. Doing so can damage the fork and could cause failure (figure 2).
2. Assemble the fork, headset and any spacers in the headtube of the bicycle and install the stem (figure 3).
3. The spacer stack between the headset and stem must not exceed 50mm (figure 4).
 - ▲ WARNING:** Failure to properly install and adjust handlebar and stem can result in serious injury.
4. A steerer tube must extend 7-8 mm above the top of the stem clamp and have a 10 mm spacer installed between the stem and top cap (figure 5).
 - ▲ WARNING:** Failure to retain 7mm of steerer above the stem clamp may result in steerer failure.
5. Carefully measure and mark the amount of steerer tube to be removed. Remember that, when cut, the top of the steerer tube must be 2-3mm below the top of the headset spacer/stem assembly (figure 6).



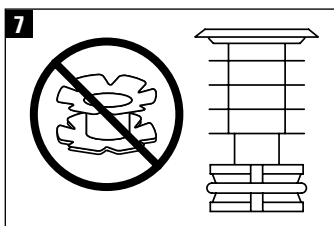
- A Compression device
- B 10mm spacer
- C Spacers (50mm max)
- D Upper headset
- E Headtube
- F Lower headset
- G Fork crown race
- H Top of steerer tube
- I Fork steerer tube
- J Crown race seat

6. Remove the fork from the headtube.
7. Make certain that you do not cut the steerer tube too short—measure twice, cut once.

Carbon Steerer Cutting

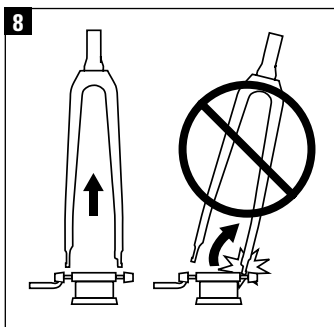
1. Cut the steerer tube using a hacksaw with a fresh 32 tpi tungsten carbide steel blade, and cutting guide.
2. Remove burrs and sharp edges with a synthetic scouring pad.
3. Clean the steerer tube and inside of the stem clamp using rubbing alcohol to remove any grease and dirt.

▲ WARNING: Never use a star nut with a carbon steerer tube fork (figure 7). Star nuts can only be used with aluminum steerer tube forks. Use only a compression device designed for carbon steerers.



Fork Installation

1. Install spacers, stem, etc. and tighten compression plug (if applicable) to 1.6 Nm (15 in-lb).
2. Insert top cap and tighten to headset/top cap manufacturer's recommend torque specifications.
3. Tighten stem steerer clamp bolts to stem manufacturer's recommended torque specifications.
4. Install and adjust the front brake following the brake manufacturer's instructions.



▲ WARNING: Failure to properly install and adjust brakes can result in serious injury.

5. Install the front wheel according to the thru-axle or quick release manufacturer's instructions.

▲ WARNING: Failure to properly adjust the quick release or thru-axle to secure the wheel can result in serious injury.

Fork-Mount Bicycle Racks

1. When using a fork-mount (axle dropout-clamping) bicycle rack, always ensure the clamp is closed securely to prevent dropout and/or bike damage. If the clamp is set too loosely the bike can fall out of the rack.
2. When removing the fork from the clamping device make sure to pull/push straight up allowing the dropouts to be removed evenly and at the same time. Do not tilt the bike to remove it from the clamping device, as dropout damage can result (figure 8).

▲ WARNING: Dropout damage can cause component failure, which can result in serious injury.

Ongoing Fork Maintenance

▲ WARNING: Do not modify the fork, other than cutting the steerer tube to the correct length for your bicycle. Modifying the fork could cause fork or other component failure resulting in serious injury.

1. Loosen the stem's steerer clamp bolts before making any stem-to-fork alignment adjustments.
2. Periodically remove, clean, and inspect your fork for damage, cracks, or any other signs of premature wear. Any questions about marks or cracks on the fork should be directed to your Whisky Parts Co. dealer immediately.

3. In the event of a crash or impact, carefully inspect handlebars, fork, stem, seatpost, wheels, and the frame for any visible damage. As with any component under varying degrees of stress there is a fatigue life that is proportional to the type of use and abuse applied to the part. Always inspect your components before a ride. If you have doubts about the integrity and condition of any part, replace it. Consult your dealer if you are unsure about the condition of your components or any part of your bicycle.

Fender Installation (For Forks with Fender Mounts)

▲ WARNING: To avoid potential serious injury, Whisky recommends that its forks be used solely with ISO-approved quick-release fenders. Consult fender manufacturer for specific compatibility.

▲ WARNING: Do not mount racks or any other load bearing accessory to the fender mounts. Doing so could result in fork breakage, causing a loss of control.

1. Remove set screws from fender mounting holes.
2. Apply Blue threadlocker onto bolts.
3. Thread M5 nuts onto bolts.
4. Make sure the nuts are threaded into the bolts at least 6 to 7 threads.
5. Thread bolts into fork leg fender-mounting holes.
6. Make sure fender mounts are threaded in at least 4 threads.
7. Thread nut up to the fork leg.
8. Make sure fender mount face is parallel with plane of frame and fork.
9. Tighten nut to 3–4 Nm to lock fender mount into position.
10. Check that assembly is properly tight.
11. Install fenders per fender manufacturer's specifications.
NOTE: Whisky recommends breakaway fenders only!
12. An M5 screw will need to be used to mount fender crown hardware to fork.

Ongoing Fender Maintenance

Periodically check to make sure all mounting bolts are properly tightened to the frame, and that the fenders are properly tightened and installed per the fender manufacturer's specifications.

Limited Warranty

Whisky Parts Co. warrants this part against manufacturing defects in materials, craftsmanship and design for a period of five years from the date of purchase for only the original owner with accompanying proof of purchase.

This warranty applies to and covers only Whisky Parts Co. branded product.

TO THE EXTENT NOT PROHIBITED BY LAW, THESE WARRANTIES ARE EXCLUSIVE AND THERE ARE NO OTHER EXPRESS OR IMPLIED WARRANTIES OR CONDITIONS INCLUDING WARRANTIES OR CONDITIONS OF MERCHANTABILITY AND FITNESS FOR A PARTICULAR PURPOSE.

Warranty Exclusions:

- Damage due to improper installation or follow-up maintenance or lack of skill, competence or experience of the user or assembler
- Products that have been modified, neglected, used in competition or for commercial purposes, misused or abused, involved in accidents or anything other than normal use
- Installation of components, parts, or accessories not originally intended for or compatible with Whisky Parts Co. products
- Damage or deterioration to the surface finish, aesthetics, or appearance of the product including but not limited to paint damage
- Normal wear and tear
- Labor required to remove and/or refit and re-adjust the product within the bicycle assembly
- Damage to carbon fiber caused by any carbon assembly paste

This limited warranty is expressly limited to the repair or replacement of a defective product, at the option of Whisky Parts Co. and is the sole remedy of the warranty. This limited warranty applies only to the original purchaser of the product and is not transferrable. This warranty applies only to products purchased through an authorized dealer or distributor. In no event shall Whisky Parts Co. be liable for any loss, inconvenience or damage, whether direct, incidental, consequential, or otherwise resulting from breach of any express or implied warranty or condition, of merchantability, fitness for a particular purpose, or otherwise with respect to Whisky Parts Co. products except as set forth herein. This warranty gives the consumer specific legal rights, and those rights and other rights may vary from place to place. This warranty does not affect your statutory rights. Whisky Parts Co. products are warranted against manufacturing defects in materials and workmanship from the date of retail purchase of the product, subject to the limitations detailed above.

Submitting a Claim

Claims can be made anywhere Whisky Parts Co. products are sold. When in doubt, contact your local shop. Please provide details about what happened including but not limited to other components used in conjunction with the alleged defective Whisky part. Proof of purchase is required before a warranty claim is processed. Failure to register will not affect consumer rights under the limited warranty stated above, so long as the consumer can show in a reasonable manner proof of original ownership and the date the Whisky Parts Co. product was purchased.

Warranty Registration:

Proof of purchase is required before a warranty claim is processed. Whisky Parts Co. therefore strongly encourages warranty registration at whiskyparts.com. Failure to register will not affect consumer rights, so long as the consumer can show in a reasonable manner proof of original ownership and the date the Whisky Parts Co. product was purchased. If you have any questions contact warranty@whiskyparts.com or visit www.whiskyparts.com/warranty for more warranty information.