

ALLOY & CARBON FORK STEERER INSTRUCTIONS

CAUTION!

All Whisky Parts Company products should be professionally installed by a trained bicycle mechanic using appropriate tools. A torque wrench must always be used when tightening bolts to recommended torque specifications. Bolts that are too loose or too tight can cause failure. **Whisky Parts Company assumes no liability for products that are improperly installed. See limited warranty.**

! WARNING!

Failure to follow these instructions can result in component failure. Component failure can lead to loss of control while riding the bicycle resulting in serious personal injury or death.

! WARNING!

Bicycle riding can be dangerous. To prevent serious injury while riding, wear an approved helmet every time you ride. Be sure your bicycle is properly maintained and that all components are correctly installed and adjusted. Ride cautiously and within your abilities at all times.

Intended Use

For specific ASTM use conditions by product, see the chart ASTM Riding Conditions Classifications under the safety tab on whiskyparts.com.

1. Stem & Headset Preparation

- Verify that the fork, headset and all required parts for proper assembly have compatible dimensions

The fork, headset, headset spacers and stem steerer clamp must have compatible diameters. Incorrect use of components can cause component failure.

Visit headsetfinder.com to verify fork-to-frame compatibility options.

Visit bicycleheadsets.com to learn more about headset fit and the new Standardized Headset Identification System.

- Make sure headset parts that come into contact with the steerer tube are free of burrs or sharp edges. Remove burrs or sharp edges by using very fine grit sandpaper
- Make sure stem parts that come into contact with the steerer tube are free of burrs or sharp edges. Remove burrs or sharp edges with very fine grit sandpaper
- Only use rear slot-style clamping stems. Wedge clamp stem designs must not be used and could result in failure (only applicable on carbon steerers) (Figure 1)

2. Fork Preparation

- Avoid scratching or scoring the steerer tube. **Any damage to the steerer tube could cause failure**
- Apply a small amount of grease to the crown race seat. Do not make modifications to the crown race seat of the fork. Only use a headset crown race with the correct inside diameter for your fork steerer tube

Visit headsetfinder.com to verify fork to frame compatibility options.

- Hold one leg of the fork securely while using a crown race installation tool to install the headset crown race

Do not place the fork on the dropout tips or crown while installing the race. Doing so can damage the fork and could cause failure. (Figure 2)

- Assemble the fork, headset and any spacers in the headtube of the bicycle and install the stem (Figure 3)
- The spacer stack between the headset and stem must not exceed 50mm (Figure 4)
- A carbon steerer tube must extend 7–8mm above the top of the stem clamp and have a 10mm spacer installed between the stem and top cap (CARBON) (Figure 5)
- Carefully measure and mark the amount of steerer tube to be removed. Remember that, when cut, the top of the steerer tube must be 2–3mm below the top of the headset spacer/stem assembly (Figure 6)
- Remove the fork from the headtube
- Make certain that you do not cut the steerer tube too short—measure twice, cut once**

ALLOY

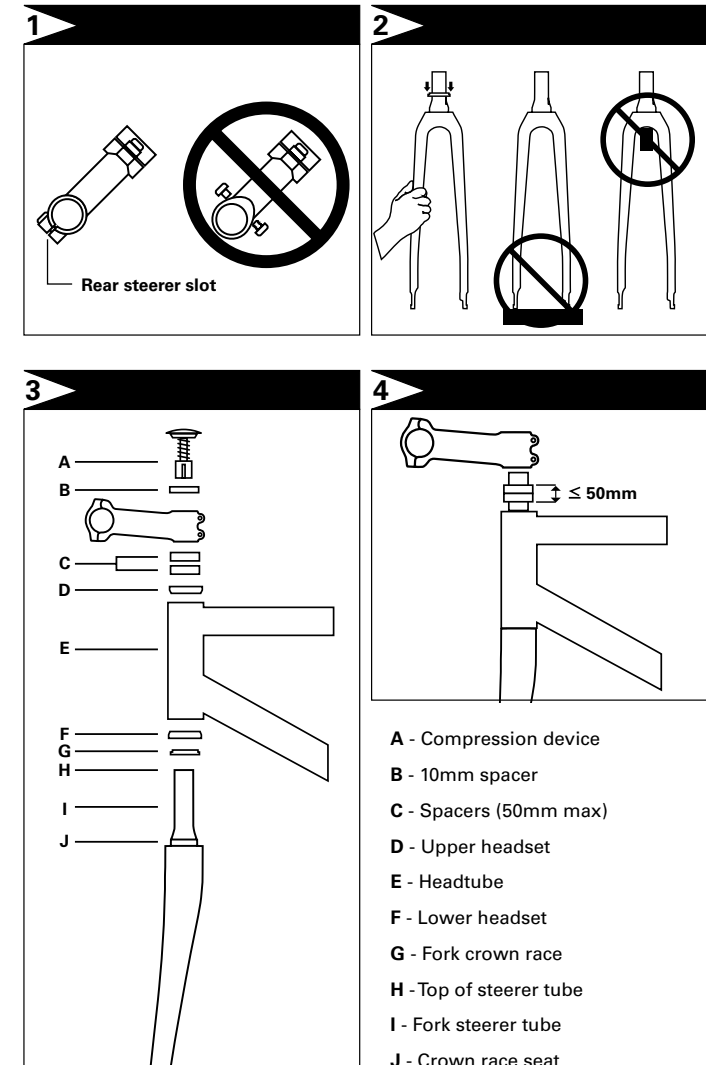
- Using a new fine tooth hacksaw blade and proper cutting guide, cut the steerer tube. A pipe-cutter may be used with aluminum steerer tubes
- Using fine grit sand paper, remove burrs and sharp edges
- Using rubbing alcohol, clean the steerer tube and inside of the stem clamp to remove grease and dirt
- Using a star-nut setting tool, install the star nut supplied with your headset into the steerer tube per the headset manufacturer's instructions

CARBON

- Using a new fine tooth hacksaw blade (preferably a carbon-specific blade) and proper cutting guide, cut the steerer tube
- Using a synthetic scouring pad, remove burrs and sharp edges
- Using rubbing alcohol, clean the steerer tube and inside of the stem clamp to remove grease and dirt

! WARNING!

Never use a star nut with a carbon steerer tube fork (Figure 7). Star nuts can only be used with aluminum steerer tube forks. Use only a compression device designed for carbon steerers.



ALLOY & CARBON FORK STEERER INSTRUCTIONS continued

3. Fork Installation

- Assemble the fork, headset, headset spacers in the headtube of the bicycle and slide on the stem and 10mm spacer. Insert headset compression adjustment device (compression plug) into steerer and adjust headset tension using appropriate tool according to the headset manufacturer's instructions. If torque specifications are not provided, tighten to 1.6Nm (15 in-lb)
- Tighten stem steerer clamp bolts to stem manufacturer's recommended torque specifications
- Only use the front brake nut supplied with the fork to mount the front brake (only applicable on road forks)
- Install the front brake following the brake manufacturer's instructions
- Follow the wheel manufacturer's instructions for correct clamping of the wheel quick release and install the front wheel

Failure to properly adjust the quick release and secure the wheel can result in serious injury or death.

- Adjust the front brake following the brake manufacturer's instructions
Failure to properly install and adjust brakes can result in serious injury or death.

4. Fork Mount Bicycle Racks

- When using a fork-mount (axle dropout-clamping) bicycle rack, always ensure the clamp is closed securely to prevent dropout and/or bike damage. If the clamp is set too loosely the bike can fall out of the rack
- When removing the fork from the clamping device make sure to pull/push straight up allowing the dropouts to be removed evenly and at the same time. Do not tilt the bike to remove it from the clamping device, as dropout damage can result (Figure 8)

Dropout damage can cause component failure, which can result in serious injury or death.

5. Ongoing Maintenance

- Do not modify the fork, other than cutting the steerer tube to the correct length for your bicycle
Modifying the fork could cause fork or other component failure resulting in serious injury or death
- Loosen the stem's steerer clamp bolts before making any stem-to-fork alignment adjustments
- Periodically remove, clean and inspect your fork for damage, cracks or any other damage. Any questions about marks or cracks on the fork should be directed to your Whisky Parts Company dealer immediately
- Regularly inspect all components for any damage (cracks, chips, etc.) and replace components upon detection
- In the event of a crash or impact, carefully inspect handlebars, fork, stem, seatpost, wheels and the frame for any visible damage. As with any component under varying degrees of stress there is a fatigue life that is proportional to the type of use and abuse applied to the part. Always inspect your components before a ride. If you have doubts about the integrity and condition of any part, replace it. Consult your dealer if you are unsure about the condition of your components or any part of your bicycle

Whisky Parts Company Limited Warranty

Whisky Parts Company warrants this part against manufacturing defects in materials, craftsmanship and design for a period of five years from the date of purchase for only the original owner with accompanying proof of purchase. This warranty applies to and covers only Whisky Parts Company branded product.

TO THE EXTENT NOT PROHIBITED BY LAW, THESE WARRANTIES ARE EXCLUSIVE AND THERE ARE NO OTHER EXPRESS OR IMPLIED WARRANTIES OR CONDITIONS INCLUDING WARRANTIES OR CONDITIONS OF MERCHANTABILITY AND FITNESS FOR A PARTICULAR PURPOSE.

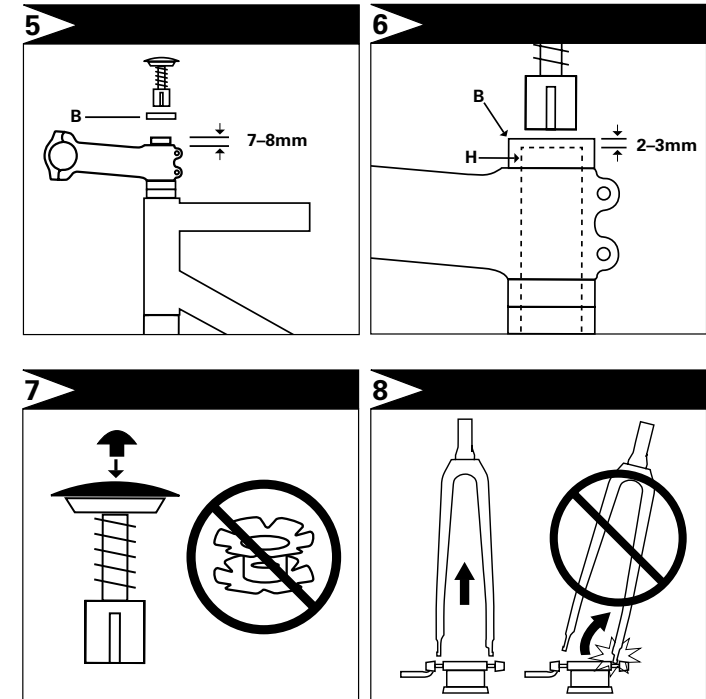
Warranty Exclusions:

- Damage due to improper installation or follow-up maintenance or lack of skill, competence or experience of the user or assembler
- Products that have been modified, neglected, used in competition or for commercial purposes, misused or abused, involved in accidents or anything other than normal use
- Installation of components, parts or accessories not originally intended for or compatible with Whisky Parts Company products
- Damage or deterioration to the surface finish, aesthetics or appearance of the product including but not limited to paint damage
- Normal wear and tear
- Labor required to remove and/or refit and re-adjust the product within the bicycle assembly
- Damage to carbon fiber caused by any carbon assembly paste

This limited warranty is expressly limited to the repair or replacement of a defective product, at the option of Whisky Parts Company and is the sole remedy of the warranty. This limited warranty applies only to the original purchaser of the product and is not transferable. This warranty applies only to products purchased through an authorized dealer or distributor. In no event shall Whisky Parts Company be liable for any loss, inconvenience or damage, whether direct, incidental, consequential or otherwise resulting from breach of any express or implied warranty or condition of merchantability, fitness for a particular purpose or otherwise with respect to Whisky Parts Company products except as set forth herein. This warranty gives the consumer specific legal rights and those rights and other rights may vary from place to place. This warranty does not affect your statutory rights.

Proper Installation

Please consult our recommended torque settings when installing all parts. Information for product-specific torque specifications can be found in our online technical information center, whiskyparts.com/safety. We recommend the use of a high-quality, reliable torque wrench to install all Whisky parts. Remember to calibrate your torque wrench.



Submitting a Claim

Claims can be made anywhere Whisky parts are sold. The most current list of authorized dealers can be found at whiskyparts.com. When in doubt, contact your local shop. Chances are pretty good they can assist.

Please provide details about what happened, including but not limited to other components used in conjunction with the alleged defective Whisky part. Proof of purchase is required before a warranty claim is processed. Whisky Parts therefore strongly encourages warranty registration at whiskyparts.com. Failure to register will not affect consumer rights under the limited warranty stated above, so long as the consumer can show in a reasonable manner, proof of original ownership and the date the Whisky product was purchased.