

WHISKY COMPRESSION PLUG INSTRUCTIONS



▲ WARNING: CYCLING CAN BE DANGEROUS. BICYCLE PRODUCTS SHOULD BE INSTALLED AND SERVICED BY A PROFESSIONAL MECHANIC. NEVER MODIFY YOUR BICYCLE OR ACCESSORIES. READ AND FOLLOW ALL PRODUCT INSTRUCTIONS AND WARNINGS INCLUDING INFORMATION ON THE MANUFACTURER'S WEBSITE. INSPECT YOUR BICYCLE BEFORE EVERY RIDE. ALWAYS WEAR A HELMET.

Additional safety info can be found at: whiskyparts.com/safety

Intended Use & Compatibility

The Whisky Parts Co. Compression Plug is designed for carbon forks with 1-1/8" carbon steerer tubes with an inside diameter of 23–25mm.

Tools Required

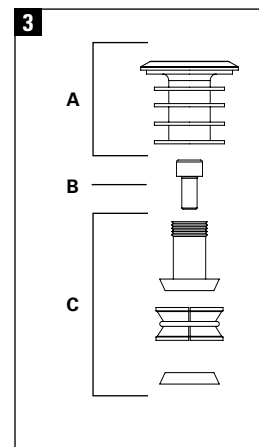
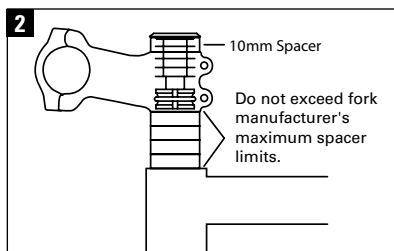
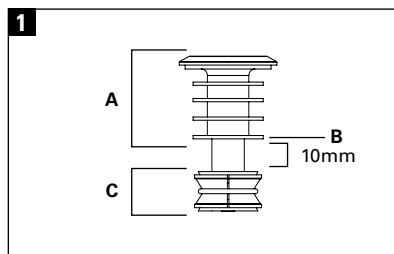
- Allen wrenches: 4, 5, 6mm
- Torque wrench that measures in Newton meters

Compression Plug Installation:

1. Prepare Compression Plug: Adjust the top cap (Fig 1-A) to leave 10mm between the lowest top cap flange (Fig 1-B) and the top of the expansion unit (Fig 1-C).
2. Install spacers and stem including a 10mm spacer above the stem (Fig 2).
3. Tighten the Compression Plug to 1.6Nm (15 in-lb) by passing a 4mm Allen wrench through the top cap to the compression plug bolt (Fig 3-B).
4. Using a 5mm Allen wrench, tighten the top cap to the headset manufacturer's torque specification.
5. Secure the stem in place per manufacturer's torque specifications.

Compression Plug Removal

1. Loosen and remove top cap with a 5mm Allen wrench.
2. Loosen the Compression Plug using a 4mm Allen wrench.
3. Remove compression assembly.



Ongoing Maintenance

▲ WARNING: Do not modify the fork other than cutting the steerer tube to the correct length for your bicycle. Modifying the fork could cause fork or other component failure resulting in serious injury.

1. Loosen the stem's steerer clamp bolts before making any stem-to-fork alignment adjustments.
2. Periodically remove, clean, and inspect your fork for damage, cracks, or any other signs of premature wear. Any questions about marks or cracks on the fork should be directed to your Whisky Parts Co. dealer immediately.
3. In the event of a crash or impact, carefully inspect handlebars, fork, stem, seatpost, wheels, and the frame for any visible damage. As with any component under varying degrees of stress there is a fatigue life that is proportional to the type of use and abuse applied to the part. Always inspect your components before a ride. If you have doubts about the integrity and condition of any part, replace it. Consult your dealer if you are unsure about the condition of your components or any part of your bicycle.

Warranty Registration:

Proof of purchase is required before a warranty claim is processed. Whisky Parts Co. therefore strongly encourages warranty registration at whiskyparts.com. Failure to register will not affect consumer rights under the limited warranty, so long as the consumer can show in a reasonable manner proof of original ownership and the date the Whisky Parts Co. product was purchased.

If you have any questions contact warranty@whiskyparts.com.